

**Bromsgrove District Council
Sickness Absence Data**

The worksheets contain the following data and charts

1. Sickness Data.

This is the base data record for sickness absence.

As previously the data records in detail the number of days lost per Service both for long and short term absence.

It also maintains a quarterly analysis for comparison purposes.

It has been modified at the request of the OMT to take account of variations in staff numbers month by month. The figures per FTE are therefore more accurate.

The data also now reports month by month on the lost days per FTE. This enables a month on month comparison to be made.

Finally the data has been extrapolated to give an indication of the position at the end of the year.

***Number of days sickness per month is shown in the right-hand columns
Number of employees absent during the current month is shown in column B***

2. Annual Graph

This graph plots the number of days lost per month

- due to short term absence
- due to long term absence and
- in total

3. Graph - Days Lost per Month

This is a graphical interpretation of the days lost per FTE per month directly comparing all Services within the Council. This also enables trends to be identified.

originally produced by:

**HR & OD Service
August 2002**

(FTE - Full Time Equivalent)

Sickness Figures for 2009/10 by Service

Total FTE @ 1st April 09	Actual no of employees - April	SERVICE	Total Sickness days April 09 & on	Days per FTE - Year to Date	Projected - per FTE	Sickness Target 2009-10	Apr-09	May-09	Jun-09	Jul-09	Aug-09	Sep-09	Oct-09	Nov-09	Dec-09	Jan-10	Feb-10	Mar-10
23.49	1.00 1.00	Legal & Democratic Short term Absences up to 28 days Long term Absences 29 days+	9.00 6.00 3.00	0.38 0.26 0.13	2.30 5.5	23.49 2.00 2.00 0.17	23.49 4.00 1.00 0.21	23.49 0.00	23.49 0.00	23.49 0.00	23.49 0.00	23.49 0.00	23.49 0.00	23.49 0.00	23.49 0.00	23.49 0.00	23.49 0.00	23.49 0.00
14.97	0.00 1.00	CEO & Policy Short term Absences up to 28 days Long term Absences 29 days+	43.00 3.00 40.00	2.87 0.20 2.67	17.23 6.0	14.97 3.00 19.00 1.47	14.97 0.00 21.00 1.40	14.97 0.00	14.97 0.00	14.97 0.00	14.97 0.00	14.97 0.00	14.97 0.00	14.97 0.00	14.97 0.00	14.97 0.00	14.97 0.00	14.97 0.00
30.12	2.00 1.00	Egovernment & Customer Services Short term Absences up to 28 days Long term Absences 29 days+	25.00 11.00 14.00	0.83 0.37 0.46	4.98 5.00	30.12 3.00 19.00 0.30	30.12 8.00 21.00 0.53	30.12 0.00	30.12 0.00	30.12 0.00	30.12 0.00	30.12 0.00	30.12 0.00	30.12 0.00	30.12 0.00	30.12 0.00	30.12 0.00	30.12 0.00
46.41	5.00 0.00	Finance Short term Absences up to 28 days Long term Absences 29 days+	18.00 18.00 0.00	0.39 0.39 0.00	2.33 9.0	46.41 6.00 0.00 0.13	46.41 12.00 0.00 0.26	46.41 0.00	46.41 0.00	46.41 0.00	46.41 0.00	46.41 0.00	46.41 0.00	46.41 0.00	46.41 0.00	46.41 0.00	46.41 0.00	46.41 0.00
7.60	1.00 0.00	HROD Short term Absences up to 28 days Long term Absences 29 days+	0.00 0.00 0.00	0.00 0.00 0.00	0.00 4.25	7.60 0.00 0.00 0.00	7.60 0.00 0.00 0.00	7.60 0.00	7.60 0.00	7.60 0.00	7.60 0.00	7.60 0.00	7.60 0.00	7.60 0.00	7.60 0.00	7.60 0.00	7.60 0.00	7.60 0.00
57.60	7.00 4.00	Planning & Environment Services Short term Absences up to 28 days Long term Absences 29 days+	174.50 67.00 107.50	3.03 1.16 1.87	18.18 7.25	57.60 56.00 48.50 1.81	57.60 11.00 59.00 1.22	57.60 0.00	57.60 0.00	57.60 0.00	57.60 0.00	57.60 0.00	57.60 0.00	57.60 0.00	57.60 0.00	57.60 0.00	57.60 0.00	57.60 0.00
158.41	18.00 7.00	Street Scene & Community Services Short term Absences up to 28 days Long term Absences 29 days+	325.50 144.50 181.00	2.05 0.91 1.14	12.33 11.0	158.41 65.00 70.00 0.85	158.41 79.50 111.00 1.20	158.41 0.00	158.41 0.00	158.41 0.00	158.41 0.00	158.41 0.00	158.41 0.00	158.41 0.00	158.41 0.00	158.41 0.00	158.41 0.00	158.41 0.00

338.60	Total Short Term Absence YTD	249.50
	Total Long Term Absence YTD	345.50
	TOTAL Days lost YTD	595.00

10.54 8.75

135.00	114.50	0.00	0.00	0.00	0.00	0.00	0.00	0.00	0.00	0.00	0.00	0.00	0.00	0.00	0.00	0.00	0.00	0.00
145.50	200.00	0.00	0.00	0.00	0.00	0.00	0.00	0.00	0.00	0.00	0.00	0.00	0.00	0.00	0.00	0.00	0.00	0.00
280.50	314.50	0.00	0.00	0.00	0.00	0.00	0.00	0.00	0.00	0.00	0.00	0.00	0.00	0.00	0.00	0.00	0.00	0.00

TARGET sick days per FTE per month	
BVPI 12 Sick Days Per FTE in Month	
TARGET sick days per FTE YTD	
BVPI 12 - Sick Days per FTE YTD	
BVPI 12 Projected Outturn	

0.71	0.71	0.71	0.71	0.71	0.71	0.71	0.71	0.71	0.71	0.71	0.71	0.71	0.71	0.71	0.71	0.71	0.71	0.71
0.83	0.93																	
0.71	1.42	2.13	2.84	3.55	4.26	4.97	5.68	6.39	7.18	7.97	8.75							
0.83	1.76																	
9.94	10.54																	

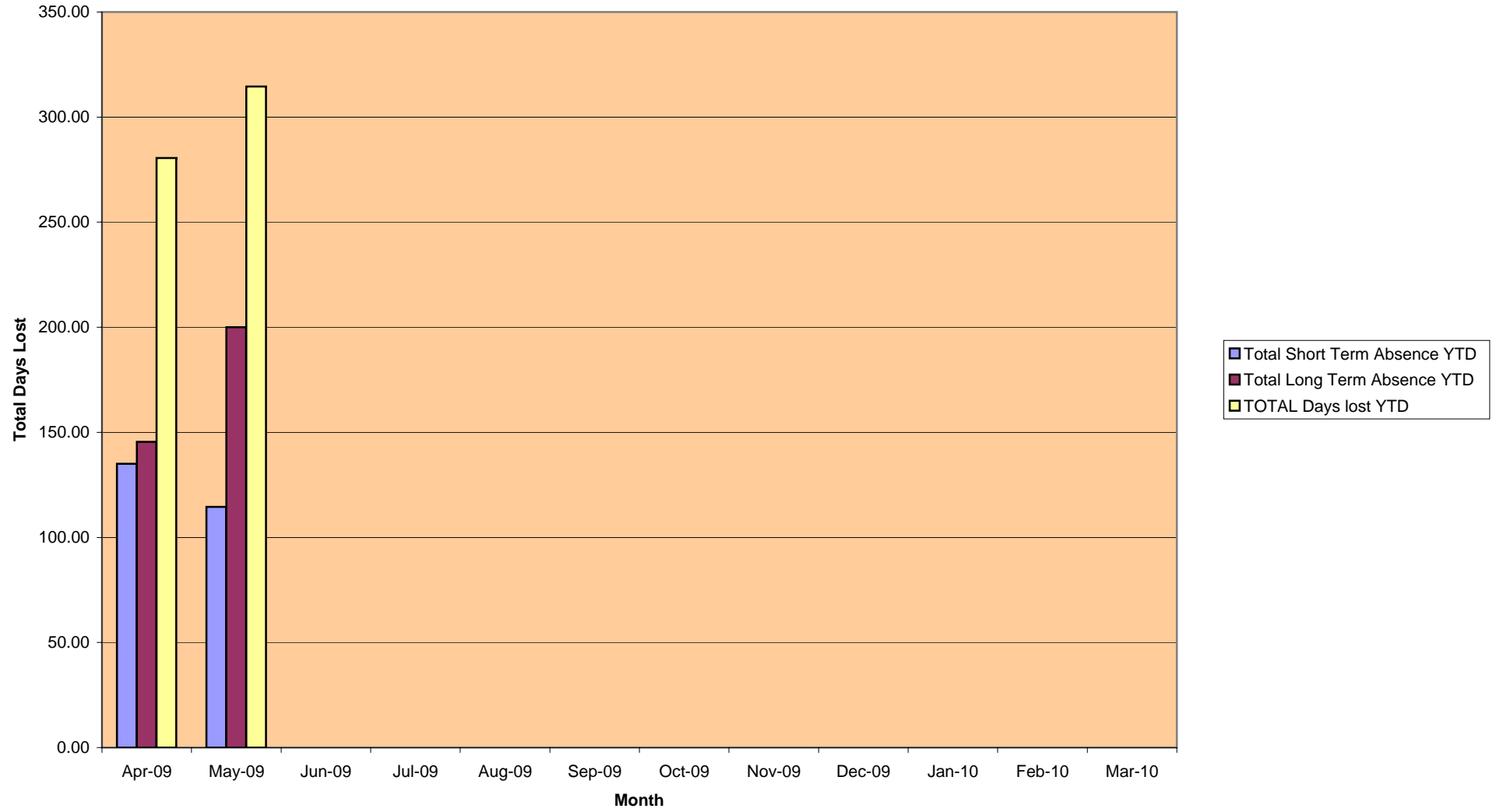
2005-06	3570.58
2006-07	3806.00
2007-08	3348.50
2008-09	3753.50
2009-10	595.00
Year	Annual

695.38	949.95	883.98	1041.27
1067.00	959.50	951.00	828.50
792.00	759.50	963.00	834.00
674.50	1088.50	1160.00	830.50
595.00	0.00	0.00	0.00
Quarter 1	Quarter 2	Quarter 3	Quarter 4

FTE April 09 338.60
FTE March 10
of Months average 2

Key: more than 10% worse than target worse than target, but within 10% on or better than target

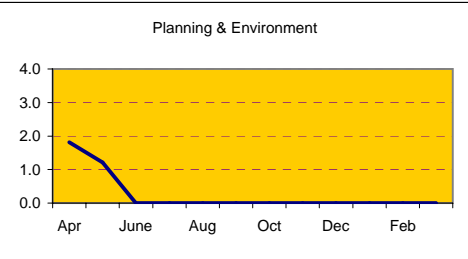
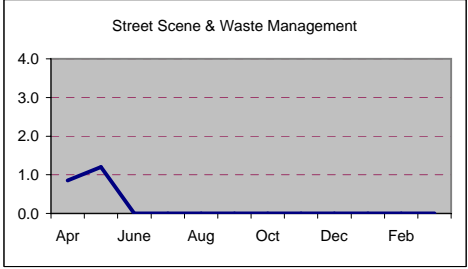
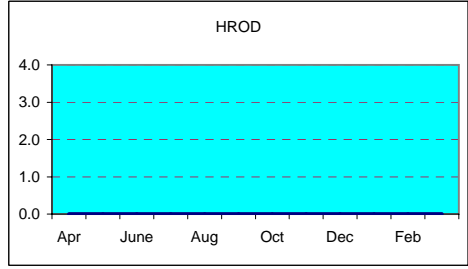
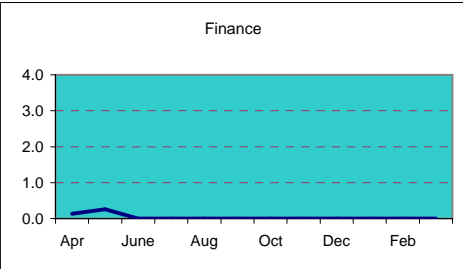
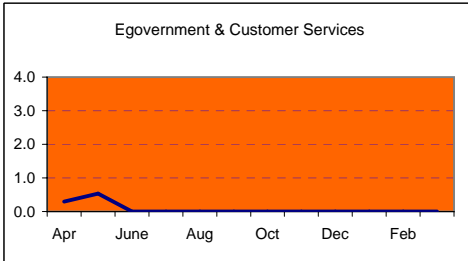
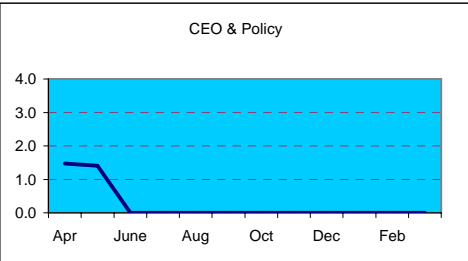
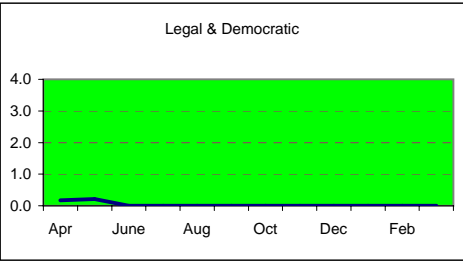
Sickness Absence Data 2008 / 2009



BVPI 12 Sick Days Per FTE in Month

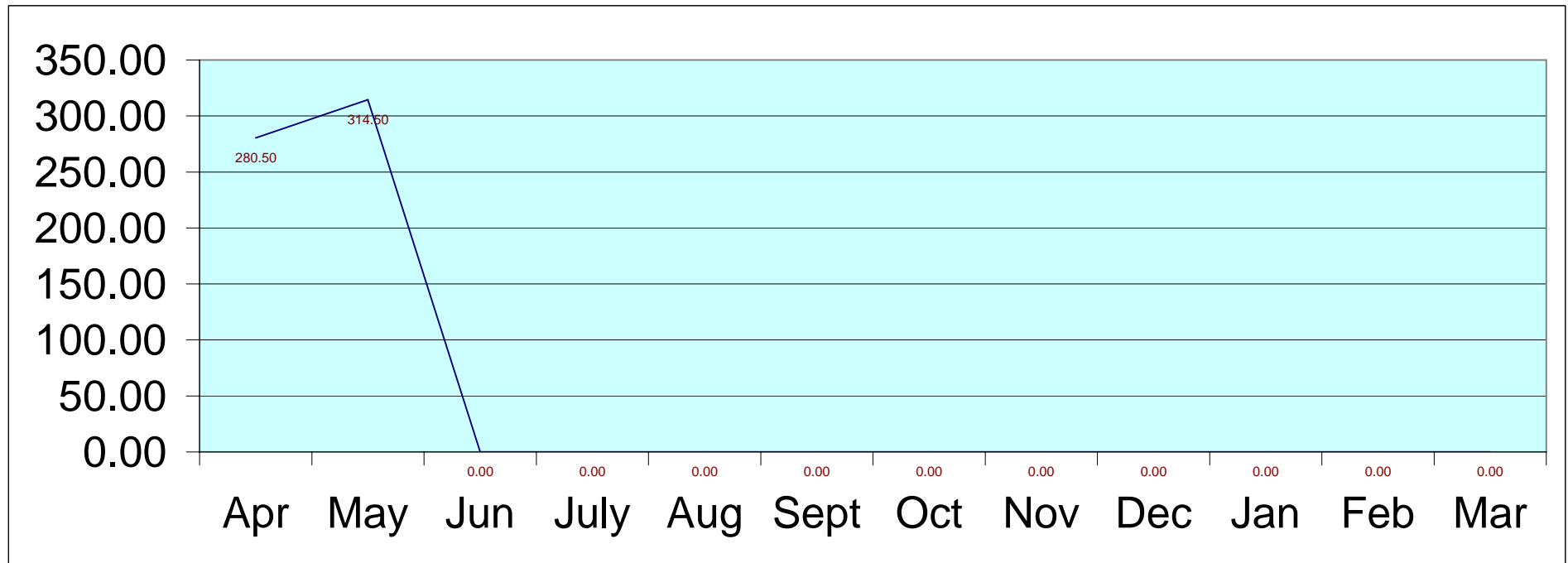


Bromsgrove District Council



Bromsgrove District Council

Graph - Total days lost in month
2009-2010
HR Services



Total days sickness per FTE

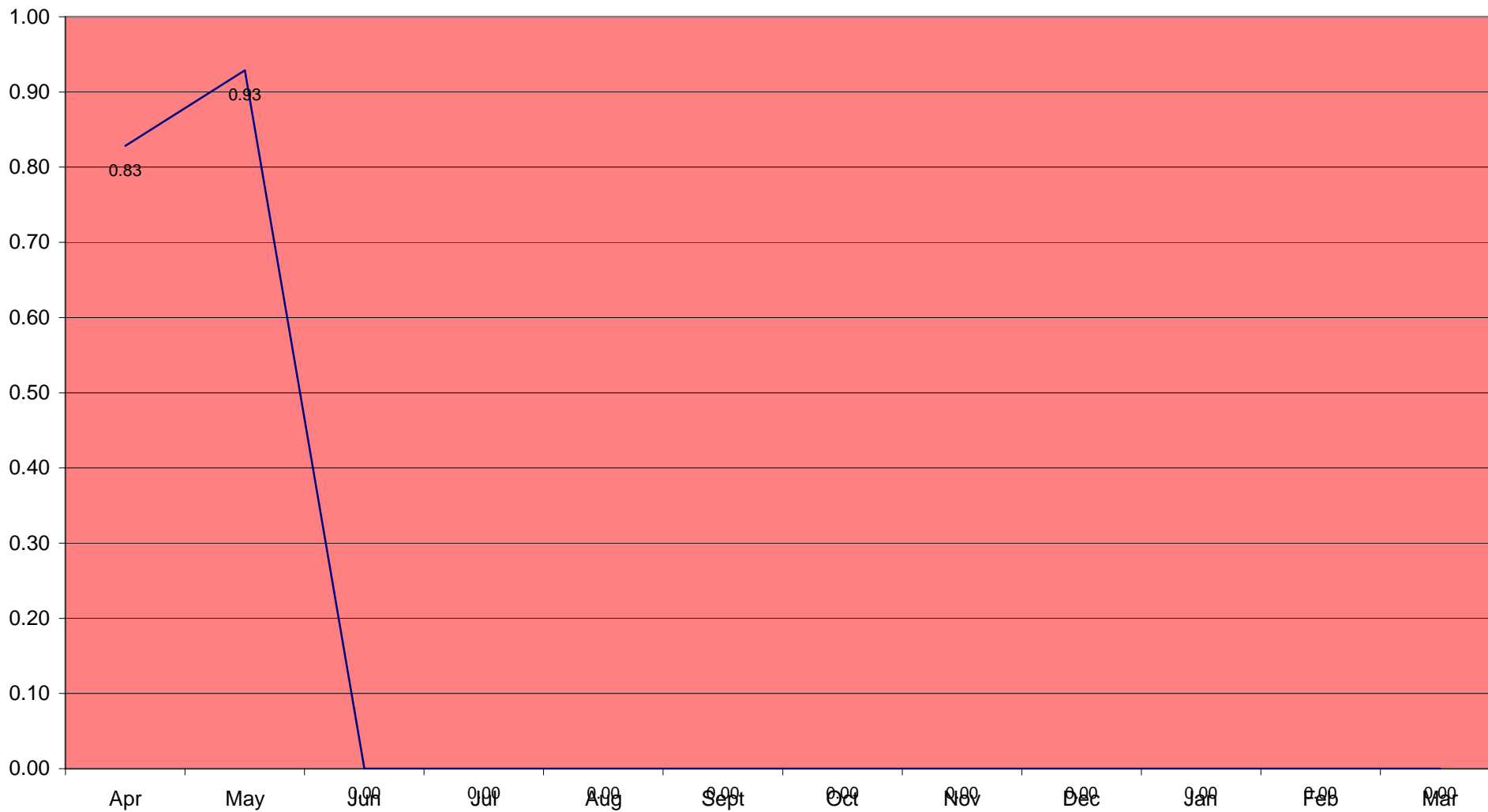


Chart showing projection per FTE against the Councils Target

